




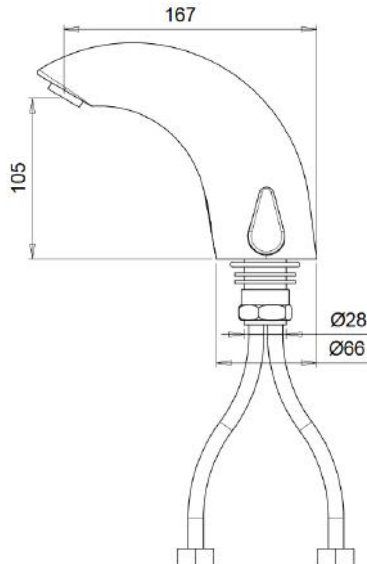







Acme Sanitary Ware Co Ltd

Acme Building, 22-28 Nanking Street, Kowloon, Hong Kong
 Tel: 2388 7171 Fax: 2710 8012
 E-mail: acme@acmesanitary.com.hk
 Website: www.acmesanitaryware.com.hk



PROJECT		REF		REV	ITEM CODE	
LOCATION		DATE			PAGE	

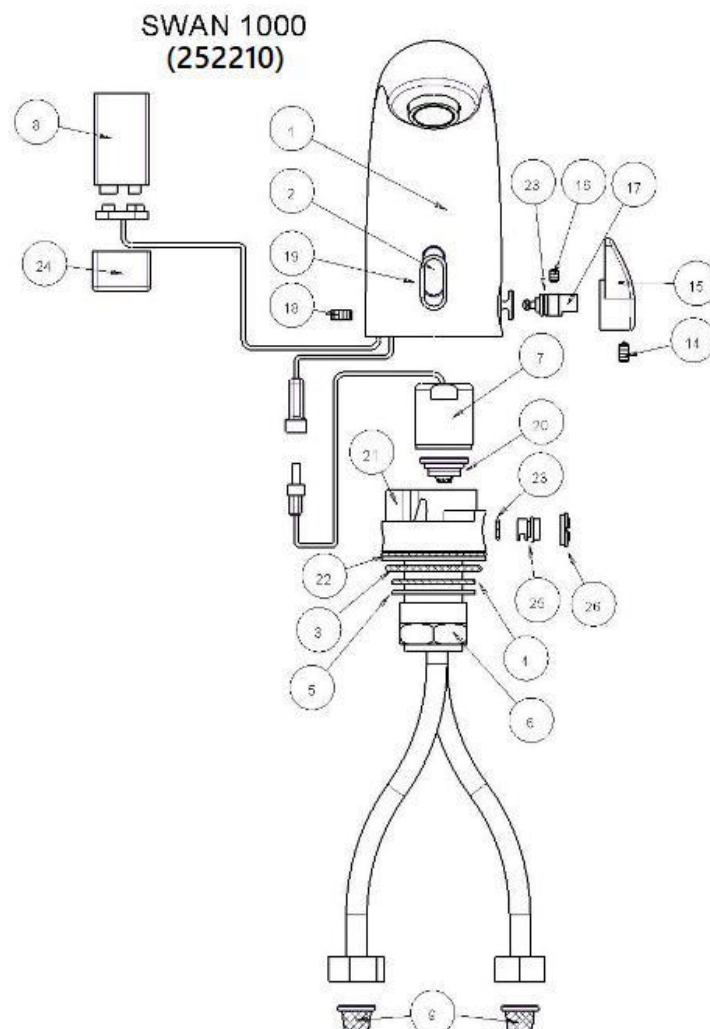
SANITARY WARE SPECIFICATION SHEET

Item Descriptions	Stern (Israel) "Swan 1000" Chrome plated deck mounted sensor mixer with adjustable temperature limiter in 9V DC Supply with internal 9V Lithium battery ; top access replacement of batteries	Illustration/ Drawing																																																						
Dimensions	L167 x W66 x H105 mm	 																																																						
Model	Swan 1000 AB 1953																																																							
Code Number	252210																																																							
Finish	Chrome Plated																																																							
Supplier	Acme Sanitary Ware Co. Ltd Mr. Eric Wong/ Mr. Don Yuen (852) 2388-7171 / (852) 2710-8012 acme@acmesanitary.com.hk www.acmesanitary.com.hk																																																							
Contact Tel/Fax																																																								
E-mail																																																								
Website																																																								
SWAN 1000 AB 1953 Ref # 252210 Touch-free electronic faucet for deck-mounted installations. Activated by an infrared sensor. Solid brass one-piece construction. For hot and cold water, includes a mixer for water temperature adjustment. Filters included. Includes a low battery indicator. Latching solenoid valve is located above deck inside the product for added vandal protection. Solid brass one-piece construction. Adjustable settings by remote control: sensor range, security time, delay in, delay out, on-off and reset to factory settings.																																																								
Application: Deck-mounted faucet. Combining an elegant design with anti-vandal features. Easy installation. Long lasting even in the harshest installation sites. Helps washrooms stay clean and saves water. Prevents cross contamination. Ideal for stadium, train and bus stations and highway rest stops.																																																								
Use: Touch-free electronic faucet. The faucet is automatically activated when users place their hands in the sensor range and stops when the users remove their hands.																																																								
<table><tr><th colspan="6">PRODUCT AT A GLANCE</th></tr><tr><td>Installation</td><td colspan="5">Deck-mounted</td></tr><tr><td>Power Supply</td><td colspan="5">• 9V battery • 9V transformer</td></tr><tr><td>Operating pressure</td><td colspan="5">0.5-8.0 bar / 7.0-116.0 PSI</td></tr><tr><td>Water supply</td><td colspan="5">Hot and cold water</td></tr><tr><td>Water flow</td><td colspan="5">6 LPM / 1.58 GPM - SSR PCA stream</td></tr><tr><td>Water Saving Options</td><td colspan="5">4 LPM / 1 GPM ; 3 LPM / 0.8 GPM 1.89 LPM / 0.5 GPM ; 1.3 LPM 0.35 GPM - PCA spray</td></tr><tr><td>Water temperature</td><td colspan="5">70°C Maximum</td></tr><tr><td>Security Time</td><td colspan="5">Auto shutoff after 90 seconds. adjustable by remote control</td></tr></table>			PRODUCT AT A GLANCE						Installation	Deck-mounted					Power Supply	• 9V battery • 9V transformer					Operating pressure	0.5-8.0 bar / 7.0-116.0 PSI					Water supply	Hot and cold water					Water flow	6 LPM / 1.58 GPM - SSR PCA stream					Water Saving Options	4 LPM / 1 GPM ; 3 LPM / 0.8 GPM 1.89 LPM / 0.5 GPM ; 1.3 LPM 0.35 GPM - PCA spray					Water temperature	70°C Maximum					Security Time	Auto shutoff after 90 seconds. adjustable by remote control				
PRODUCT AT A GLANCE																																																								
Installation	Deck-mounted																																																							
Power Supply	• 9V battery • 9V transformer																																																							
Operating pressure	0.5-8.0 bar / 7.0-116.0 PSI																																																							
Water supply	Hot and cold water																																																							
Water flow	6 LPM / 1.58 GPM - SSR PCA stream																																																							
Water Saving Options	4 LPM / 1 GPM ; 3 LPM / 0.8 GPM 1.89 LPM / 0.5 GPM ; 1.3 LPM 0.35 GPM - PCA spray																																																							
Water temperature	70°C Maximum																																																							
Security Time	Auto shutoff after 90 seconds. adjustable by remote control																																																							
<table><tr><th colspan="4">ORDERING INFORMATION</th><th colspan="2">OPTIONS</th></tr><tr><th>MODEL</th><th>CODE</th><th>POWER</th><th>ADDITIONAL FEATURES</th><th>OPTION</th><th>CODE</th></tr><tr><td>SWAN 1000</td><td>252210</td><td>9V internal battery</td><td rowspan="3">AB 1953 Lead Free With mixer for water temperature adjustment</td><td>Remote control</td><td>07100005</td></tr><tr><td>SWAN 1000 B</td><td>252310</td><td>9V battery</td><td>Matching battery-powered soap dispenser</td><td>250920</td></tr><tr><td>SWAN 1000 E</td><td>252420</td><td>9V transformer</td><td>Matching transformer-powered soap dispenser combination</td><td>250910</td></tr></table>			ORDERING INFORMATION				OPTIONS		MODEL	CODE	POWER	ADDITIONAL FEATURES	OPTION	CODE	SWAN 1000	252210	9V internal battery	AB 1953 Lead Free With mixer for water temperature adjustment	Remote control	07100005	SWAN 1000 B	252310	9V battery	Matching battery-powered soap dispenser	250920	SWAN 1000 E	252420	9V transformer	Matching transformer-powered soap dispenser combination	250910																										
ORDERING INFORMATION				OPTIONS																																																				
MODEL	CODE	POWER	ADDITIONAL FEATURES	OPTION	CODE																																																			
SWAN 1000	252210	9V internal battery	AB 1953 Lead Free With mixer for water temperature adjustment	Remote control	07100005																																																			
SWAN 1000 B	252310	9V battery		Matching battery-powered soap dispenser	250920																																																			
SWAN 1000 E	252420	9V transformer		Matching transformer-powered soap dispenser combination	250910																																																			
<div><div>Installation: Lavatory mounted</div><div>Water supply: Hot & Cold (2 inlets)</div><div>Water temperature: Max 70 °C</div><div>Operating pressure: 0.5 - 8.0 bar</div><div>Power source: Internal 9V Lithium battery</div><div>Stern Soap & Water: Swan Soap dispenser</div></div> 																																																								

* All information of the above is for the reference only. No prior notice is made if any changes.



SPARE PARTS LIST



Quantity	Part Number	Description	Cat. No.
-	-	Seals and Screws Kit	07210029
1	3	O-ring	
1	4	Gasket	
1	19	O-ring	
2	23	O-ring	
1	22	O-ring	
1	18	Screw	
-	-	Sensor Kit	07220189
1	2	Infra Red Sensor	
1	19	O-ring	
-	9	Filter	08530014
-	-	Solenoid Valve Kit	07230002
1	7	Solenoid valve	
1	20	Diaphragm	
-	20	Diaphragm	04500001
-	-	Insert Kit	07240003
1	21	Insert	
1	22	O-ring	
1	3	Seal	
1	4	Gasket	
1	5	Disk	
1	6	Hexagonal nut	
1	25	Mixer	
1	26	Mixer's nut	
1	23	O-ring	
-	-	Mixer Handle Kit	07260000
1	15	Override handle	
1	14	Screw	
1	16	Screw	
1	17	Shaft for mixer	
1	23	O-Ring	
-	-	Mixer Kit	07250002
1	25	Mixer	
1	26	Mixer's nut	
1	23	O-ring	
-	24	Battery cover	06500001

Note: In order to locate the relevant spare part, please check the corresponding parts and part number in the drawing. Minimum order quantity will be required.

* All information of the above is for the reference only. No prior notice is made if any changes.



FAUCET INSTALLATION

STEP 1 – PREPARATION FOR MOUNTING THE FAUCET

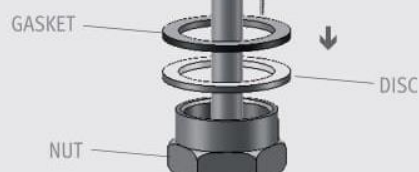
1

Shut off the water supply.



2

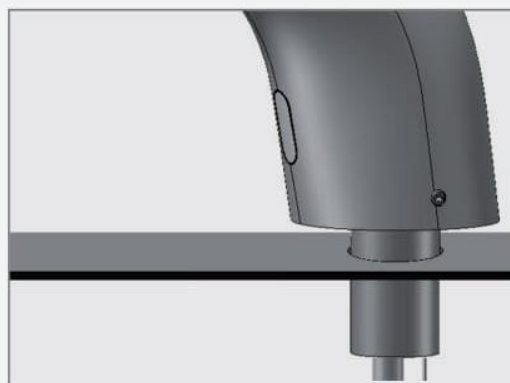
Remove the hexagonal nut, the disk and the gasket. Do not remove the O-ring from the base of the faucet.



STEP 2 – INSTALLING THE FAUCET

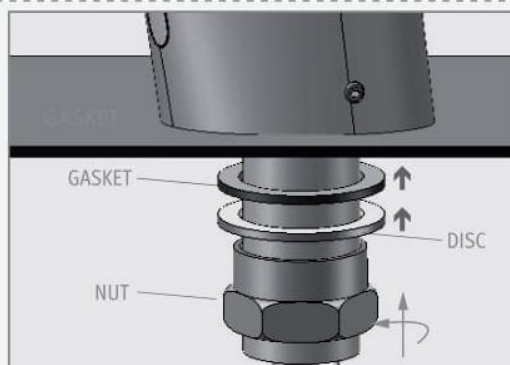
1

Place the faucet with O-ring into the hole in deck or lavatory. Make sure the O-ring is located between the deck or lavatory and the bottom of the faucet.



2

Below the deck, slide the gasket, disk and hexagonal nut over the flexible hose and secure the faucet into place.





FAUCET INSTALLATION

STEP 3 – CONNECTING THE WATER SUPPLY

1

Connect the flexible pipe to the water supply.

For models with temperature control connect the red flexible pipe to the hot water supply and the blue flexible pipe to the cold water supply.

Make sure the filter (s) is installed between the flexible hose (s) and the shut off valve (angle valve - not supplied).



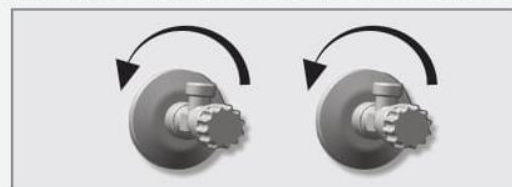
2 INLETS VERSION



1 INLET VERSION

2

Turn on the central water supply and the shut-off valves (angle valves) and check for leaks.



STEP 4 – CONNECTING THE POWER SOURCE

If your model is Swan 1010 \ Swan 1000: your product contains an internally mounted 9V battery. To activate it, proceed to clause # 2.

If your model is Swan 1010 B \ Swan 1000 B: install the battery box underneath the sink with the cable connection pointing down and connect the connectors.



1

If your model is Swan 1010 E \ Swan 1000 E: Plug the transformer into the electricity socket and connect the connectors.





Acme Sanitary Ware Co Ltd

Acme Building, 22-28 Nanking Street, Kowloon, Hong Kong

Tel: 2388 7171 Fax: 2710 8012

E-mail: acme@acmesanitary.com.hk

Website: www.acmesanitaryware.com.hk

stern

FAUCET INSTALLATION

2

Remove the protective sticker from the sensor



3

Wait a few seconds before activating the faucet. If the range is unsatisfactory, refer to the section titled "Settings adjustment".



**ABOUT
15
SECONDS**



TROUBLESHOOTING

PROBLEM	INDICATOR	CAUSE	SOLUTION
No water coming out of the faucet:	1. Sensor flashes continuously when user's hands are within the sensor's range.	Low battery.	Replace battery
	2. LED in the sensor does not flash once when user's hands are within the sensor's range.	1. Range is too short.	Increase the range
		2. Range is too long.	Decrease the range
		3. Battery is completely used up	The battery must be replaced.
		4. Unit is in "Security Mode"*	
		5. Sensor is picking up reflections from the washbasin or another object.	Eliminate cause of reflection.
	3. LED in the sensor flashes once when user's hands are within the sensor's range.	1. Connectors between the electronic unit and solenoid are disconnected.	Connect the electronic unit connectors to the solenoid.
		2. Debris or scale in solenoid.	Unscrew solenoid, pull out the plunger and the spring from the solenoid and clean them. Use scale remover material if needed. When replacing the plunger, please make sure that the spring is in vertical position.
		3. The central orifice in the diaphragm is plugged or the diaphragm is torn	Clean the orifice or replace diaphragm.
		4. The water supply pressure is higher than 8 bar.	Reduce the supply water pressure.
		5. The water supply pressure is under 8 bars and yet the pressure in the faucet's body is higher. This situation could be caused by a sudden increase in the water supply pressure that the back check prevents from dropping, even after water supply pressure drops under 8 bars.	Shut off water supply and unscrew one of the flexible pipes in order to reduce the pressure that blocks the product.
Water flow from spout does not stop:	1. Sensor flashes once when user's hands are within the sensor's range.	Debris or scale in diaphragm	Clean the orifice or replace diaphragm.
	2. LED in the sensor does not flash once when user's hands are within the sensor's range.	1. Sensor is dirty or covered.**	Clean or eliminate cause of interference.
		2. Sensor is picking up reflections from the washbasin or another object.	Decrease the range or eliminate cause of reflection.
Water flow diminished		Filter or aerator is clogged	Remove, clean, re-install

* "Security Mode": If the sensor is covered for more than 90 sec. the faucet will automatically shut off water flow. To return to normal operation remove any blockage.

** In this case, the water flow will stop anyway after 90 seconds because of the security time.

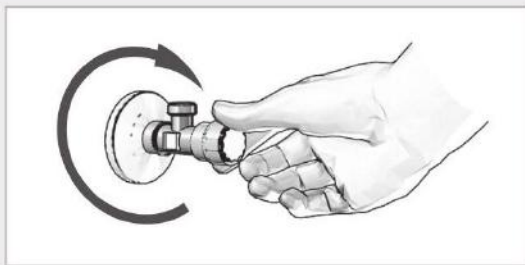


BATTERY REPLACEMENT

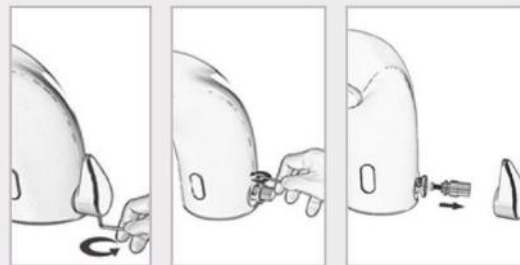
SWAN 1010 AB 1953/ SWAN 1000 AB 1953

When the battery weakens, the LED indicator light will blink at a constant rate. The battery must be replaced within two weeks.

To replace the battery at Swan 1010 \ Swan 1000 models:



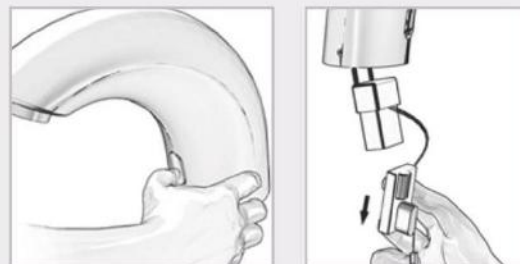
- 1 Turn off the shut off valve (angle valve).
If your model is **Swan 1010**, go to 3



- 2 If your model is **Swan 1000**:
Release the handle-set-screw to remove the mixing handle. Release the Allen screw to carefully remove the axis assembly by pulling it out.



- 3 Release the Allen screw to carefully remove the faucet's body.
Disconnect the connector from the electronic unit's connector.



- 4 Carefully push the sensor into the faucet's body to gain access to the battery and pull it out of the body together with the battery.

Replace the used battery with a new 9V battery. A lithium battery is recommended.

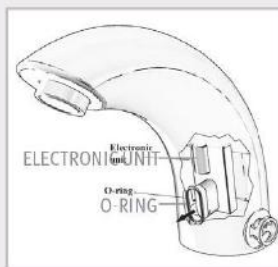


BATTERY REPLACEMENT

SWAN 1010 AB 1953/ SWAN 1000 AB 1953

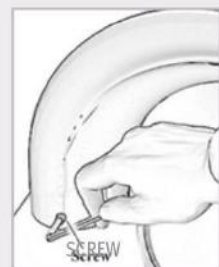
- 5 Prior to reassembling the electronic unit and the battery, make sure that the o-ring is still in its groove and not damaged. Replace it with a new one if needed. Clean and lubricate it with silicone grease.

Important: Make sure that the faucet is not wet when reassembling the electronic unit.



- 6 Carefully place the battery inside the body and reassemble the electronic unit in its place. Be sure to insert the electronic unit all the way back into the opening in the faucet's body by pushing it moderately into the o-ring.

Swing the sensor gently to align it with its location. Be careful and make sure that you do not tear the o-ring. If torn replace it with a new one.



- 7 Reconnect the electronic unit's connector to the solenoid connector. Place the body, and tighten the screw.

If your model is Swan 1000:

Reassemble the axis-assembly and tighten the Allen screw. Reassemble the mixing handle and tighten the Allen screw.

Turn on the shut off valve (angle valve).